

COUNTIS M



When **energy** matters

 **socomec**
Innovative Power Solutions



COUNTIS M03 & M13

Energy meters

Single-phase - direct 45 A & 100 A



COUNTIS M03



COUNTIS M13

Overview

SOCOME COUNDIS M03 & M13 are energy meters designed for single-phase metering direct connection for 45 A & 100 A mounted on a standard DIN rail. It supports RS485 communication and is suited for domestic and commercial power distribution systems.

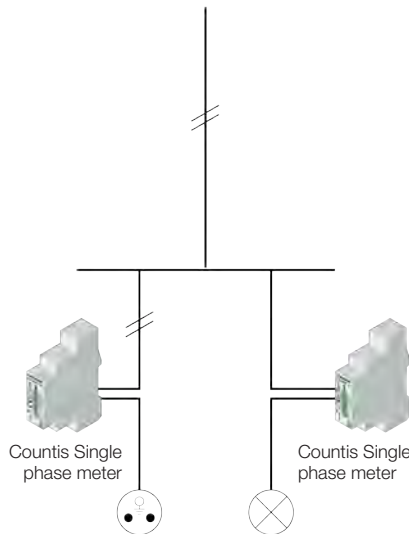
Functions

COUNDIS single phase meter is a modular electrical energy meter which can display active energy(kWh) and other data on LCD screen.

The meter is intended to record single-phase load energy, with direct connection of 45 A & 100 A. The product ensures superior measurement accuracy of 1% even at low currents.

Customer benefits

- Reduction of energy costs by tracking the consumption pattern through multiple electrical parameters in one device.
- Avoid frequent site visits. Countis M series with RS485 & pulse output will enable you to configure & monitor remotely your installation.
- The meter can calculate active power demand and maximum demand value.
- Multi-parameter monitoring: I, V, P, Q, S and PF, etc.
- 2 channels of pulse output (the first can be set)



The solution for

- > Public & Commercial buildings
- > Data Centers
- > Infrastructures
- > Industry



Strong Points

- > Compact design
- > Measurement accuracy: 1%
- > White LCD Display
- > Protection rating: IP 51
- > RS485 communication (MODBUS)

Conformity to standards

- > IEC 62052-11
- > IEC 62053-21
- > IEC 62053-23





COUNTIS M33 & M43

Energy meters

Three-phase - direct 100 A & up to 6000 A via CT



COUNTIS M33



COUNTIS M43

Overview

SOCOME C COUNTIS M33 & M43 are three phase four wire DIN RAIL mounted energy meters with backlit LCD screen. It supports RS485 communication and pulse output.

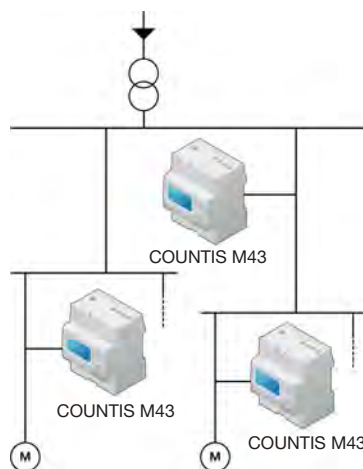
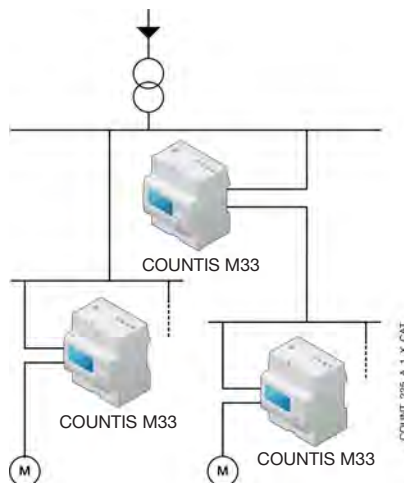
The COUNTIS M33 model is intended for three phase load metering for direct connections to 100 A and M43 model works in three-phase electricity networks via CT input connection up to 6000A.

Functions

COUNTIS M33 & M43 are energy meters intended to measure and display total active energy (kWh), reactive energy (kVarh) and other values. It also monitor demand and total harmonic distortion.

Customer benefits

- Reduction of energy costs by tracking the consumption pattern through multiple electrical parameters in one device.
- Avoid frequent site visits. Countis M series remote transmission function combined with RS485 & pulse output will enable you to configure & monitor remotely.
- The meter can calculate the active energy, reactive energy, demand, maximum demand and total harmonic distortion.
- Multi-parameter monitoring: I, U, V, P, Q, S and PF etc. and load curves.



The solution for

- > Industry
- > Public building
- > High rise building



Strong Points

- > Compact & modular design
- > Backlit LCD screen
- > RS485 communication (MODBUS) and pulse output
- > Multi-parameter measurement

Conformity to standards

- > IEC 62052-11
- > IEC 62053-21(for M33)
- > IEC 62053-22(for M43)
- > IEC 62053-23



Technical Parameters

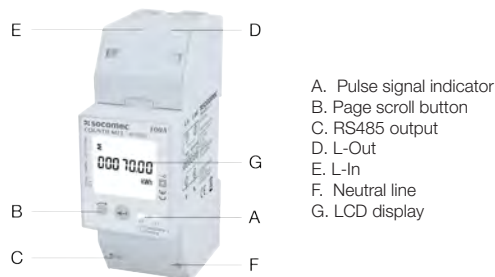
	Single Phase		Three Phase	
Electrical	COUNTIS M03	COUNTIS M13	COUNTIS M33	COUNTIS M43
Reference	48C0 3018	48C0 3019	48C0 3020	48C0 3021
Type	Modular		Modular	
Rated Current	5 (45)A	10 (100) A	10(100)A	5(6000(CT))A
Rated Voltage	230V±20%		3 x 230/400V±20%	
Pulse constant	1: Adjustable; 2: 1Wh/imp		1: Adjustable; 2: 2.5Wh/imp	1: Adjustable; 2: 0.3Wh/imp
Frequency	50/60 Hz		50/60 Hz	
Accuracy rating	1.00%		1.00%	0.50%
Power consumption	≤2W/10VA		≤2W/10VA	
Startup current	0.004 Ib		0.004 Ib	0.002 Ib
Installation category	CAT II		CAT III	
Type of display	LCD Backlight		LCD Backlight	

Mechanical	COUNTIS M03	COUNTIS M13	COUNTIS M33	COUNTIS M43
No of modules	1	2	4	
Dimensions (W X H X D)	17.5 x 119 x 62mm	36 x 99 x 63mm	72 x 100 x 66 mm	72 x 94.5 x 65 mm
Rigid cable connection section	2.5 – 10 mm²	4 – 25 mm²	4-25 mm²	0.5-2.5 mm²
Flexible cable connection section	2.5 – 10 mm²	4 – 25 mm²	4-25 mm²	0.5-2.5 mm²
Weight	100 g	200 g	420 g	330 g

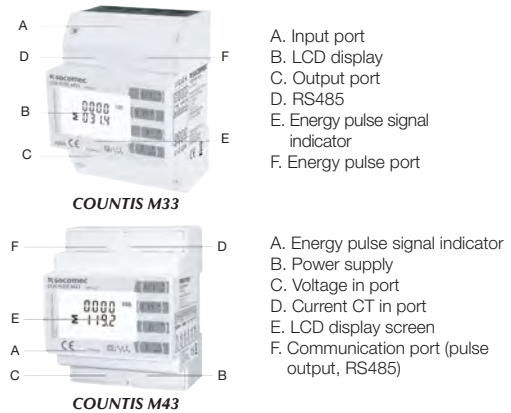
Environmental	COUNTIS M03	COUNTIS M13	COUNTIS M33	COUNTIS M43
Operating Temperature	-25~+55°C		-25~+55°C	
Maximum humidity	≤95%		≤90%	
Class of pollution	2		2	
Case protection rating	IP 20		IP 20	
Panel protection rating	IP 51		IP 51	

Communication & Standard	COUNTIS M03	COUNTIS M13	COUNTIS M33	COUNTIS M43
Interface	RS485		RS485	
Type	2 wires or 3 half duplex wires		2 wires or 3 half duplex wires	
Protocol	MODBUS® RTU		MODBUS RTU	
MODBUS speed	1200/2400/4800/9600bps		2400-38400 bps	
Standard	IEC 62052-11		IEC 62052-11	IEC 62052-11
	IEC 62053-21		IEC 62053-21	IEC 62053-22
	IEC 62053-23		IEC 62053-23	IEC 62053-23

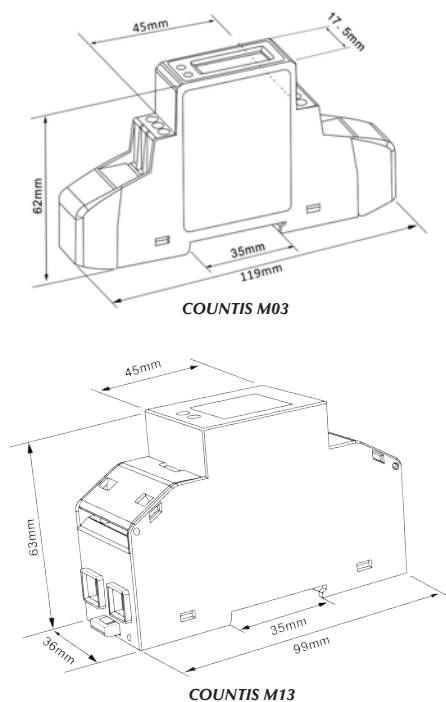
Front Panel (Single Phase)



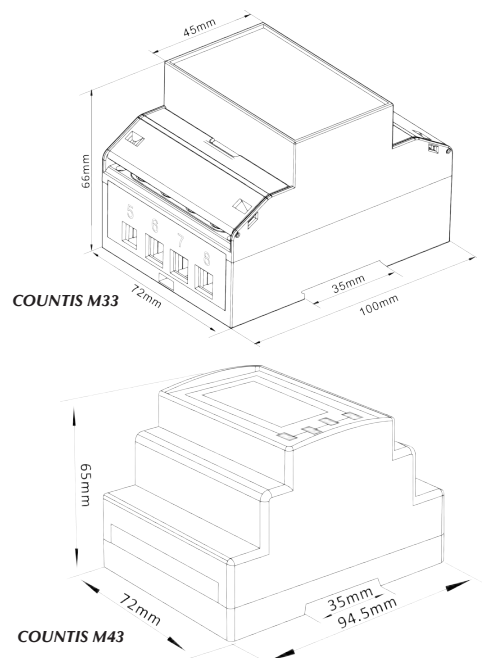
Front Panel (Three Phase)



Dimensions (Single Phase)

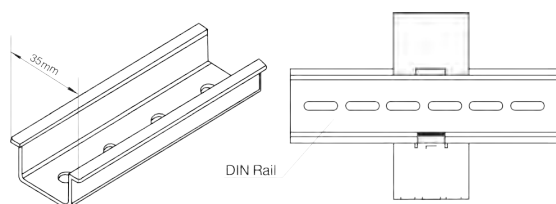


Dimensions (Three Phase)



Mounting Instructions

1. Select a 35 mm standard rail (length as required), and secure to the chosen position for mounting.
2. Push the clips down one tooth
3. Fit the meter into the rail, then push the clips up a tooth to mount the meter onto the rail.
4. Connect as shown in the wiring diagram.
5. After connecting, seal the wiring cover with lead seals.



Socomec: our innovations supporting your energy performance

1 independent manufacturer

3,600 employees
worldwide

10 % of sales revenue
dedicated to R&D

400 experts
dedicated to service provision

Your power management expert



POWER
SWITCHING



POWER
MONITORING



POWER
CONVERSION



ENERGY
STORAGE



EXPERT
SERVICES

The specialist for critical applications

- Control, command of LV facilities
- Safety of persons and assets
- Measurement of electrical parameters
- Energy management
- Energy quality
- Energy availability
- Energy storage
- Prevention and repairs
- Measurement and analysis
- Optimisation
- Consultancy, commissioning and training

A worldwide presence

12 production sites

- France (x3)
- Italy (x2)
- Tunisia
- India
- China (x2)
- USA (x3)

28 subsidiaries and commercial locations

- Algeria • Australia • Belgium • China • Canada
- Dubai (United Arab Emirates) • France • Germany
- India • Indonesia • Italy • Ivory Coast • Netherlands
- Poland • Portugal • Romania • Singapore • Slovenia
- South Africa • Spain • Switzerland • Thailand
- Tunisia • Turkey • UK • USA

80 countries

where our brand is distributed

INDIA CORPORATE OFFICE

B1, II Floor
Thiru-Vi-Ka Industrial Estate
Guindy, Chennai - 600 032
Tel: +91 44 3921 5400 / 5466
Mob: +91 9711229993, +91 9940633654
info.in@socomec.com
CIN: U31200TN2006PTC060156



MANUFACTURING FACILITY

756 Pace City II
Sector 37
Gurugram - 122 001
Haryana
Tel: +91 124 4562700, 4597803
Fax: +91 124 4562733
CIN: U00000HR1999PTC038504

REGIONAL & RESIDENT OFFICES

Ahmedabad : +91 8939008184, +91 9727753931
Bengaluru : +91 9886323448, +91 9972578171
Chandigarh : +91 9023154784
Cochin : +91 8939550688, +91 9745012322
Coimbatore : +91 8939550688, +91 9003032012
Hyderabad : +91 9642528800, +91 9959444277
Indore : +91 9827674469
Kolkata : +91 7550048077, +91 8697709095
Lucknow : +91 9711029289
Mumbai : +91 8879791802, +91 9987052602
New Delhi : +91 9953595413, +91 9958591713
Pune : +91 9987946398, +91 9987052604
Trivandrum : +91 9020179364
Vadodara : +91 8939008184
Vijayawada : +91 9515100473

HEAD OFFICE

SOCOMEK GROUP

SAS SOCOMEC capital 10633100 €
R.C.S. Strasbourg B 548 500 149
B.P. 60010 - 1, rue de Westhouse
F-67235 Benfeld Cedex
Tel. +33 3 88 57 41 41 - Fax +33 3 88 57 78 78
info.scp.isd@socomec.com

YOUR DISTRIBUTOR / PARTNER

www.socomec.co.in

